

~ D ~ CARD.99.09037

\* = DISCONTINUED

For sustainable options: see backside



90093.1  
90001.1  
90017.2  
91509.2  
91038.2  
92039.2  
91269.3  
92093.3

97140.2  
97024.2  
\* 91022.2  
92506.2  
92052.2  
92142.3  
92148.3  
93629.3

93581.4  
93627.5  
93170.4  
93281.5  
93158.4  
94409.5  
\* 94410.5  
97226.3

93064.2

93628.2

93412.2

94241.2

94361.3

93456.4

93461.4

94034.2

94240.2

94393.4

94081.3

94264.3

95986.5

94255.5

\* 94363.5

\* 98448.5

85377.2

95074.2

98014.2

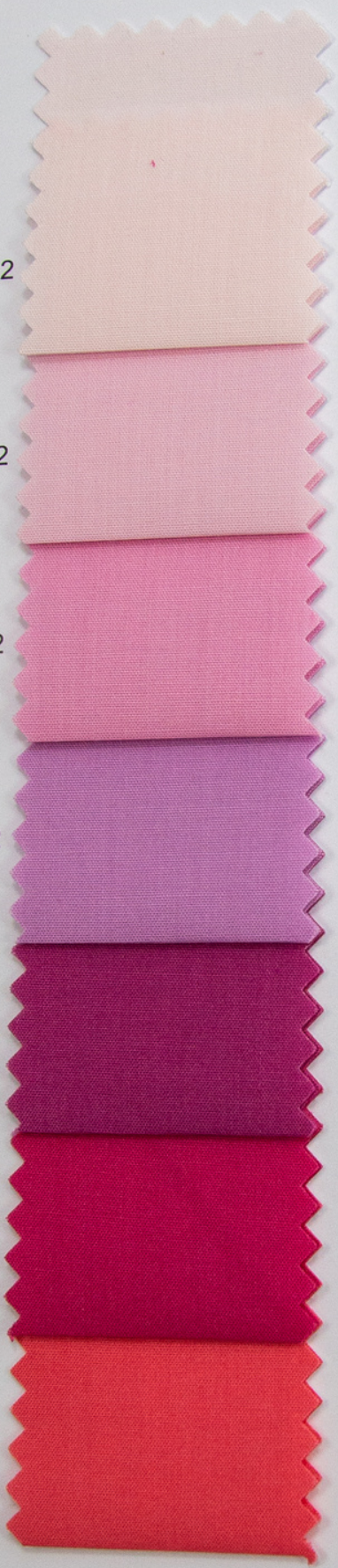
98011.2

98060.3

98405.3

98088.4

98139.4





96088.3

97150.2

97283.2

90045.3

91117.3

97545.3

97426.4

\* 97546.5

97019.4

96784.3

96674.4

\* 96841.4

96843.4

96693.3

96425.5

96339.4

96842.5

96005.2

95887.2

95946.3

85193.5

85400.5

85239.3

95058.2

85261.2

95103.3

95070.3

95061.3

95073.3

95179.3

85260.3

95535.3

85259.4

85398.4

95330.3

95480.3

95276.4

95333.4

95516.5

9037 -  
72.95449.4

95536.4

85305.5

95254.4

85216.5

85227.5

95063.4

95042.4

99017.4

